



Intrusion

Eyetec™ sets  
new standards





## Eyetec™ opens new dimensions

The unique combination of optical and passive infrared detection technology provides unmatched advantages for monitoring movement. The new Eyetec™ motion detector achieves unparalleled detection reliability and false alarm immunity due to intelligent image evaluation. Its revolutionary antiblocking function makes it more resistant to tampering than any other detector of its kind. Special features include selectable monitoring zones, moving direction identification and storage of the alarm image history.

# Pioneer and trend-setter

## The Eyetec™ motion detector – a revolutionary innovation.

### ■ Trailblazing technology

The Eyetec™ motion detector is based on new, leading edge technology. The combination of a passive infrared (PIR) sensor and an optical detection system (ODS) puts Eyetec in a class of its own for detection reliability and false alarm immunity.

### ■ Meets the toughest requirements

The optical dual motion detector is perfectly suited to meet the most demanding security requirements. It can even be used for complex room conditions that could not be monitored with a motion detector up to now. Furthermore, the antiblocking function identifies tamper attempts (such as being covered or masked) in the entire area monitored.

### ■ Extraordinary versatility

Eyetec is not just a motion detector, but an intelligent multifunctional detector with options never before available.

For example, Eyetec stores recorded alarm images to facilitate quick identification of the cause of an alarm. Moreover, for the first time, the area to be monitored can be freely defined. And Eyetec can be configured so even difficult areas (such as zones with pedestrian traffic and stairs) can be monitored easily.

### ■ Recognized as the best

Eyetec is the only motion detector that meets the Grade 4 specifications of the European security standard EN50131! And its Class C certification from VdS is the highest rating. But Eyetec has achieved top marks in more than these approvals and standards. The Eyetec motion detector was honored with the IFSEC 2006 Security Industry Award in the category for "Best New Intruder Alarm Product".



### Highlights

- For locations such as banks, museums, high security facilities, exclusive homes, airports, train stations, offices, retail, exhibitions and warehouses
- Unparalleled detection reliability
- Unequaled false alarm immunity
- Unique application versatility
- Highest standards and awards





# Unmatched detection reliability

Good reasons to choose the Eyetec™ motion detector.

## ■ Absolutely reliable detection

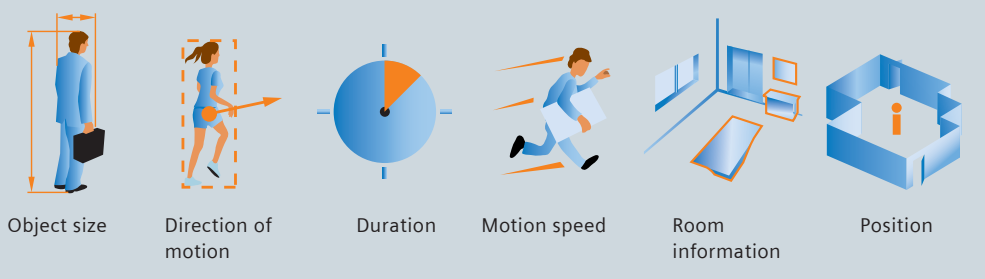
Eyetec™ is the first dual motion detector that combines image sensor and passive infrared technology, thus providing the greatest reliability of detection. The signals from both of the physically independent sensors are subjected to sophisticated evaluation and combined intelligently with sensor fusion. This combination means that you can depend on Eyetec detection even in challenging environmental circumstances.

The hermetically sealed housing prevents insects or air drafts from getting into the unit. False alarms are virtually eliminated with Eyetec.

## ■ Tamper protection without compromise

Eyetec's innovative antiblocking function detects hindrances in the field of view reliably anywhere in the room monitored – even when the unit is not armed. This makes Eyetec more secure against tampering than any other detector. Up to now, antimasking features were only effective at close range. The Eyetec's antiblocking feature, on the other hand, scans the entire room and triggers an alarm in real-time if objects obscure its field of view. Even unintentional blocking is detected reliably.

In other respects as well, Eyetec offers saboteurs no point of attack. The additional integrated back tamper monitoring feature prevents unauthorized removal of the detector. Furthermore, the detector monitors all its functions continuously and reports any irregularities promptly. The continuous innovations from the Siemens Research&Development department ensure that intruders have no chance.

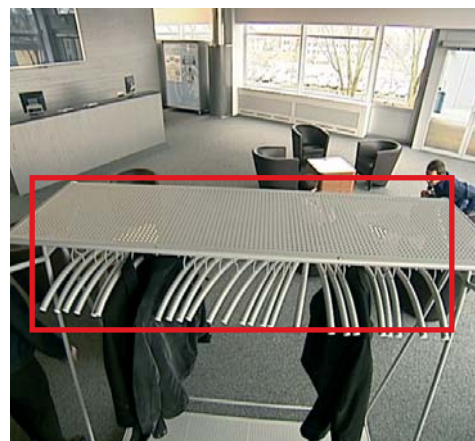


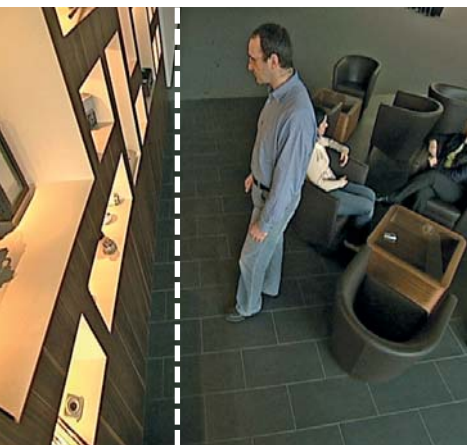
Eyetec™ is the first motion detector with comprehensive information on movements and room conditions.

## ■ Highest false alarm immunity

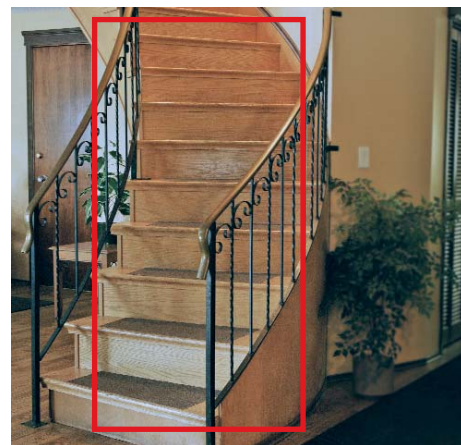
The Eyetec detector provides information about areas and movement of a quality never available before. The new perspective correction feature, for example, allows even stairs or raised areas to be custom configured and processed. Furthermore, the black triplex mirror optics filter out light sources efficiently.

Restrictions in the field of view are detected.





Eyetec triggers an alarm as soon as movement is detected in the protected area.



No false alarms in the area of stairs thanks to perspective correction.

### ■ Total monitoring control

For the first time selected areas can be screened out from surveillance – or surveillance can be exclusively focused on a special area or object. This enables monitoring for a protected area (such as a museum display) to be armed at all times without difficulty. Complex areas of a room, such as stairways, can limit the function of conventional motion detectors. Eyetec, on the other hand, requires only simple configuration to adjust to changes in perspective and can therefore avoid unnecessary alarms.

The communication software IRO ComTool allows you to configure and check custom settings simply and precisely with live images.

### ■ Set the permitted direction of motion

Eyetec registers directions of motion. This makes it possible to program a permitted direction of motion. An alarm can be triggered as soon as someone moves



Eyetec stores images for an easy alarm evaluation.

in the wrong direction. Therefore the detector can be armed even if people are still leaving the building.

### ■ All alarm images stored

Before, during and after an alarm, Eyetec stores images of the monitored zone. This facilitates quick, simple determination of the course of events and cause of an alarm.

## Highlights

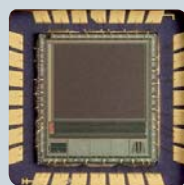
- Real-time antiblocking and antimasking
- Selectable monitoring zones
- Storage of alarm images
- Definition of permitted direction of motion
- Perspective correction

Eyetec triggers an alarm on movement in the wrong direction.

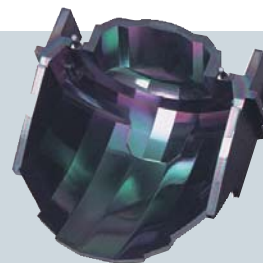


# Superior technology for your security

This groundbreaking technology by Siemens sets new standards.



CMOS image sensor



Black triplex mirror

## Highlights

- Image sensor optimized for intrusion detection
- Black triplex mirror
- Sensor fusion
- Configuration with live picture

### ■ Intelligent camera technology

The optical detection system (ODS) with CMOS image sensor meets the strictest requirements. Eyetec™ records multiple images per second and continuously compares the current image with the previous one. Multiple objects can be tracked simultaneously. The image sensor was specifically designed for intrusion detection applications. The unit monitors the entire room even if light sources in the foreground are directed at it. The CMOS technology is an energy-efficient development which ensures that Eyetec uses no more power than conventional detectors.

### ■ Black triplex mirror with PIR

Eyetec uses patented black triplex mirror technology, which is well proven for its superior reliability. It filters all visible incident light, such as sunlight or car headlights, with great efficiency, so only infrared reaches the sensor. Fifty-two precision mirror elements enable the entire room to be divided up into a grid for targeted monitoring. This enables even slight, very slow motions to be detected reliably. The four-times differentiating zoom optics facilitate the identification of object size regardless of the distance from the detector.

### ■ Sensor fusion signal analysis

Eyetec uses sophisticated algorithms to evaluate PIR and ODS signals. The two are subsequently combined in intelligent sensor fusion signal analysis. This is a proven method of highly reliable multiple-criteria analysis combined with intelligent pattern recognition. Sensor fusion, which is based on fuzzy logic, provides unbeatable detection reliability.

### ■ All-in-one detector


Eyetec offers much more than a conventional motion detector and sets new standards in security! The entire analysis of data and images takes place directly in the unit itself. Even the alarm images are stored directly in the unit. Therefore, Eyetec operates independently, and it can be connected to any conventional intrusion control panel. Configuration and transmittance of alarm images ensues with the communication software IRO ComTool via the infrared interface of a laptop computer.

### ■ Installation and configuration

Eyetec is designed for the simplest possible installation. Configuration is easy to perform with a live picture on a PC or on the unit itself using DIP switches.

# Technical overview

A summary of outstanding features.

	Eyetec™ IRO840T
	
Range	15 m
Detection technologies	PIR and ODS
Detection of covering attempts	Real-time antiblocking and antimasking
European security standard	EN50131-2, Grade 4
VdS approval	Class C, no. G106031/32
Monitoring areas	freely selectable
Detects movement direction	yes
Storage of alarm images	yes
Perspective correction	yes

## Welcome to the world of innovative thinking

### ■ Innovation

Siemens invests a great deal in both manpower and research and development. This results in a steady stream of new insights, technologies and inventions that enable us to improve the reliability of our products and systems, ensuring the securest products and making our systems even more simple and convenient to operate.

Advances in digital technologies are creating a whole new world of possibilities. Siemens is at the leading edge of progress in this field and continues to redefine both current and future technologies.

### ■ Reliability

With a history of over a hundred years, if you need an established, reliable partner you are in the very best of hands with Siemens. System expansions and upgrades can be continuously made over a period of years, which ensures your investment for the future.

### ■ Security

Siemens products and systems provide you with security. Today, tomorrow and for decades to come. That's why countless customers around the world place their trust in Siemens.



Siemens Switzerland Ltd  
Building Technologies Group  
International Headquarters  
Gubelstrasse 22  
6301 Zug  
Switzerland  
Tel +41 41 724 24 24  
Fax +41 41 724 35 22

Siemens Building Technologies  
A Division of Siemens Ltd (Australia)  
885 Mountain Hwy  
Bayswater, VIC, 3153  
Australia  
Tel +61 (0)3 9721 2000  
Fax +61 (0)3 9720 9966

Siemens Limited  
Building Technologies  
Units 1006-10  
10/F, China Resources Building  
26 Harbour Road  
Wanchai  
Hong Kong  
Tel +852 2870 7888  
Fax +852 2407 4457

Siemens Pte Limited  
Building Technologies  
The Siemens Center  
60 MacPherson Road  
348615  
Singapore  
Tel +65 6490 6000  
Fax +65 6490 6001

Bewator Limited  
A Siemens Business  
Brecon House  
Llantarnam Park  
Cwmbran  
NP44 3AB  
United Kingdom  
Tel +44 (0)871 386 0800  
Fax +44 (0)871 386 0888

The information in this document contains general descriptions of technical options available, which do not always have to be present in individual cases. The required features should therefore be specified in each individual case at the time of closing the contract.

Subject to change • Order no. A24205-A333-B219 • © Siemens Switzerland Ltd